

KYC

MEGA AGRO CORPORATION S.A.



MEGA AGRO

TRADING S.A.

Compromisso, segurança e
credibilidade
no agronegócio brasileiro

Açúcar • Milho e Soja

HEADQUARTERS:
Brazil: MEGA AGRO S.A.

BRANCHES:
MEGA AGRO CHINA.
MEGA AGRO SUGAR USA.
MEGA AGRO DUBAI.

To: Clients

In Brazil: Headquarters located in Rural Area Km 11.5, Abóboras and Fagusa Farm,
Municipality of Guaribas, Serra Talhada/PE, ZIP: 58.900-000
GOIÂNIA – GO (COMMERCIAL AND FINANCIAL OFFICE)

RONDONÓPOLIS – MT (Branch)

CURITIBA – PR (Branch)

IN DUBAI - UNITED ARAB EMIRATES: BURJ KHALIFA TOWER OFFICE 808 - DUBAI


IN CHINA – COMMERCIAL,

NO ESTADOS UNIDOS DA AMERICA – 2010 DEPOT ST. CARTERSVILLE GEORGIA 30066 USA

Institutional Website: www.megaagrogroup.com - Institutional Email: financeiro@megaagrogroup.com

International Commercial Channel: trade@megaagrogroup.com

INSTITUTIONAL PRESENTATION



A **MEGA AGRO TRADING S.A.**, registered under **CNPJ nº 24.418.553/0001-27**, is a **privately held corporation**, incorporated under the laws of the Federative Republic of Brazil, with strategic operations in the segments of **agribusiness, international trading, supply chain, agricultural commodity exports, bio-inputs and integrated global supply solutions.**

Founded with the purpose of **connecting Brazilian agro-industrial production to international markets**, the company has established itself as a robust platform for commodity origination, industrialization, trading and logistics, operating under high standards of **corporate governance, compliance, commercial intelligence and risk management.**

The company operates under the trade name **MEGA AGRO S.A.**, recognized in the domestic and international market for its reliability in executing large-volume contracts, especially in structured operations of **ICUMSA 45 sugar, yellow GMO corn, export-grade GMO soybeans, and specialty fertilizers, minerals and biological inputs.**

Corporate Structure

Its **operational headquarters** is strategically located in Brazil, in a region with strong agro-industrial vocation, enabling efficient access to key production zones, storage hubs, railway corridors and export ports.

The company maintains **commercial and operational offices** at strategic points across the national territory, with emphasis on:

- **Goiânia – GO (commercial and financial office)**
- **São Paulo – SP (business structure, compliance and international relations)**
- operational bases linked to ports and logistics centers

This structure ensures high responsiveness in **FOB, CIF, DDP and OTG**, with integrated management from origin to the end customer.

Digital Presence and Corporate Communication

- **Institutional Website:** www.megaagrogroup.com
- **Institutional Email:** financeiro@megaagrogroup.com
- **International Commercial Channel:** trade@megaagrogroup.com

Institutional communication is guided by transparency, document security and process traceability criteria, essential for banking and commercial due diligence.

ALL DATA CONTAINED IN THIS KYC IS CONFIDENTIAL. GENERAL DATA PROTECTION LAW – LGPD (LAW 13.709 2018)



Key Markets and Global Operations

MEGA AGRO S.A. maintains consolidated operations in the main international agricultural trade corridors, serving buyers, governments, funds, trading companies and industries in the following markets:

Asia

- China
- India
- Vietnam
- Indonesia
- Bangladesh

Middle East

- United Arab Emirates
- Saudi Arabia
- Qatar
- Omã
- Bahrein

Americas

- Estados Unidos
- Mexico
- Panamá
- Caribe

Africa

- Egypt
- Morocco
- Algeria
- West Africa



MEGA AGRO S.A.

Governance, Compliance and Operational Security

The company adopts strict protocols of:

- **AML / KYC / KYB**
- ***Due diligence reputacional***
- ***Anti-money laundering***
- ***International sanctions screening***
- ***Origin traceability***
- ***Tax and customs compliance***
- ***International contract management***
- ***Data protection and LGPD (Brazilian Data Protection Law)***

ALL DATA CONTAINED IN THIS KYC IS CONFIDENTIAL. GENERAL DATA PROTECTION LAW – LGPD (LAW 13.709 2018)



ALL PROCESSES FOLLOW BEST PRACTICES REQUIRED BY:

- *International banks*
- *Desks de SBLC / DLC / MT760*
- *Trade finance funds*
- *Sovereign buyers*
- *Major global importers*

Execution Capacity

MEGA AGRO S.A. has the structure for contracts of:

- **long term (12 to 60 months)**
- **spot cargo**
- **trial shipment**
- **high-volume monthly schedules**
- **embarques Panamax / Supramax / Handysize**
- **multimodal operations**

Its integrated logistics capacity enables efficient management at ports such as:

- **Paranaguá**
- **Santos**
- **São Sebastião**
- **Açu**
- **Itaqui**
- **Rio Grande**

INSTITUTIONAL PURPOSE

MEGA AGRO S.A. connects Brazilian agro-industrial production to global markets with operational excellence, sustainability and security, strengthening international supply chains and contributing to global food security.



AUTHORIZED SIGNATORY PERSONAL IDENTIFICATION

Full Name: Israel Soares Santos

Nationality: Brazilian

Date of Birth: November 19, 1998

Place of Birth: Palmas, Estado do Tocantins, Brasil

CPF: 702.559.311-74

Passaporte nº: GC220258

Issuing Authority: Brazilian Federal Police Department

Date of Issue: January 19, 2021

Date of Expiry: January 18, 2031

Residential Address:

Rua 135, nº 578, Apto. 801 - Setor Marista - Goiânia – GO – Brasil - CEP: 74180-020

Contact:

Phone / Mobile: +55 (62) 99364-5927

Corporate Email: financeiro@megaagrogroup.com



PRESIDENTIAL PROFILE OF MEGA AGRO S.A.

Israel Soares Santos serves as **President of MEGA AGRO TRADING S.A.**, leading the company with a strategic vision focused on the international expansion of Brazilian agribusiness. At the forefront of corporate, commercial and institutional operations, he drives the integration between production, logistics, compliance and global markets, strengthening the company's presence in the main international agricultural commodity corridors. His management is marked by a commitment to governance, operational security, innovation and sustainability — pillars that support the solid growth and credibility of MEGA AGRO S.A. on the national and international stage.

Mr. ISRAEL SOARES DOS SANTOS

Passport Number: GC220258

Issued by: 19/01/2021 - Country: BRAZIL





SHAREHOLDER STRUCTURE

SHAREHOLDER STRUCTURE OF MEGA AGRO S.A.:

- Israel Soares Santos — 33%
- Rodrigo Oliveira — 29%
- DVP Investment Fund — 18%
- Investor Shareholders — 10%
- Government Shareholders — 10%

Corporate Administrative Composition:

Israel Soares Santos

Position / President

- **Executive Vice-Presidency**.....

Rodrigo Oliveira

- **Financial Board (CFO)**.....

Allaércyo Vieira

- **Production / Agricultural Board**.....

Matheus Neres

- **Commercial Board**.....

Veronice Leão

- **Operations / Logistics Board**.....

Priscila Santos

- **Human Resources Board (HR)**.....

Camilla Lima

Having as the **UBO** of MEGA AGRO S.A. Mr. Israel Soares Santos, as he holds **more than 25%**, as demonstrated in the **SHAREHOLDERS**.

MEGA AGRO TRADING S.A.

- | Israel Soares Santos (33%) → UBO
- | Rodrigo Oliveira (29%) → UBO
- | DVP Fundo de Investimentos (18%)
- | Acionistas Investidores (10%)
- | Acionistas Governamentais (10%)

ORGANIZATIONAL CHART – MEGA AGRO TRADING S.A.

LEVEL 1 – GOVERNANCE AND MANAGEMENT

Board of Directors / Shareholders



President / CEO / General Management

Responsible for defining corporate strategy, governance, international expansion and cross-functional alignment.

LEVEL 2 – BOARDS AND VICE-PRESIDENCY

Reporting directly to the President / CEO:

- **Executive Vice-Presidency**
- **Financial Board (CFO)**
- **Production / Agricultural Board**
- **Commercial Board**
- **Operations / Logistics Board**
- **Human Resources Board (HR)**

LEVEL 3 – FUNCTIONAL STRUCTURE BY BOARD

1. FINANCIAL BOARD (CFO)

- Accounting
 - Accounting Assistant
- Treasury and Financial Control
- Contract Analysis
- Budget Control and Compliance

2. PRODUCTION / AGRICULTURAL BOARD

- Farm Manager
 - Production Supervisors
 - Soja
 - Milho
 - Other Crops
- Agricultural R&D
- Production Manager
- Agricultural Classification and Quality
- Storage
 - Storage Assistant



MEGA AGRO S.A.



3. COMMERCIAL BOARD

- Sales
 - Domestic Sales Division
 - International Sales Division
- Marketing
 - Marketing Assistant
- Export
 - Export Manager
 - Export Assistant

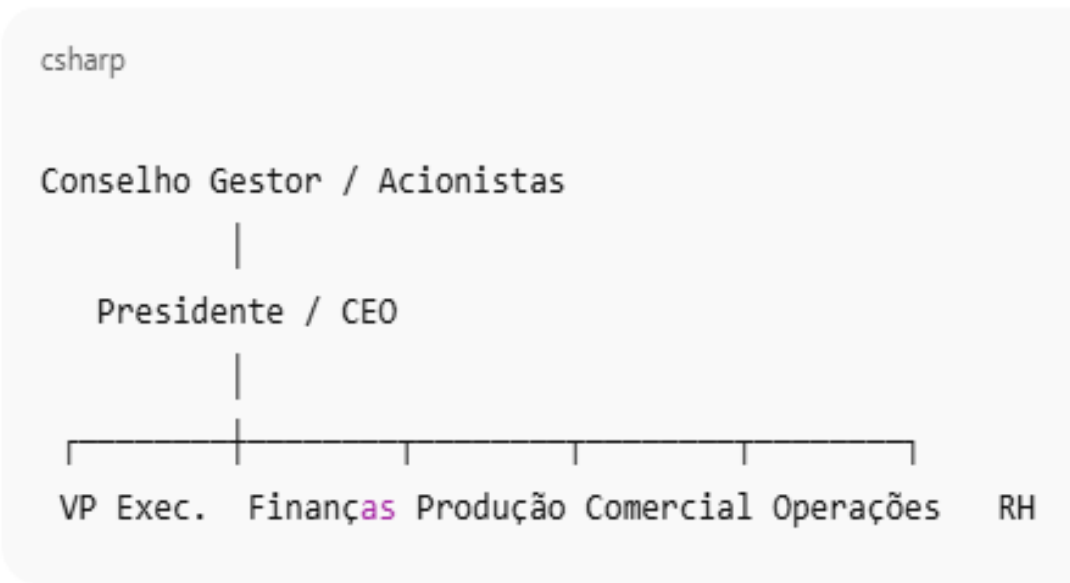
4. OPERATIONS / LOGISTICS BOARD

- Logistics
 - Logistics Transport Coordination
 - Transport
 - Storage
- Operational Quality
- Logistics and Storage Assistant

5. HUMAN RESOURCES BOARD (HR)

- Recruitment and Selection
- Training and Development
- Personnel Administration
- Administrative Support / HR

SUMMARIZED VIEW (SIMPLIFIED HIERARCHICAL FORMAT)



MEGA AGRO TRADING S.A.

CNPJ: 24.418.553/0001-27 / [Email: financeiro@megaagrogroup.com](mailto:financeiro@megaagrogroup.com)

Sede:: Rural Area Km 11.5, Abóboras and Fagusa Farm, Serra Talhada/PE – Brazil

Commercial Office: Goiânia/GO – Brazil.

ALL DATA CONTAINED IS THIS KYC IS CONFIDENTIAL. GENERAL DATA PROTECTION LAW – LGPD (LAW 13.709 2018)



CORPORATE INFORMATION

Corporate Name: MEGA AGRO TRADING S.A.

CNPJ/MF Registration: 24.418.553/0001-27

Headquarters Address: Rural Area, Km 11.5, Abóboras Farm, Fagusa, Guaribas

CEP: 58900-000

Institutional Website: www.megaagrogroup.com



BANKING INFORMATION – BRAZIL

Correspondent Bank: Banco Cooperativo Sicredi S.A.

SWIFT Code (BIC): BNBRBRCF

IBAN (US Dollar Account): BR6801181521009110000676378C1

Beneficiary: MEGA AGRO TRADING S.A.

Account Details: Branch 111 / Checking Account 67637-8

IBAN Code: BR6801181521009110000676378C1

Bank Address: Branch 111, Serra Talhada – Pernambuco – Brazil

Responsible Manager: Sr. Willian Osmar

E-mail do Gerente: willian_osmar@sicredi.com.br



SBLC ISSUANCE / GUARANTOR BANKING STRUCTURE

All Standby Letters of Credit (SBLCs) linked to the structured operations of **MEGA AGRO TRADING S.A.** will be issued through a **duly qualified financial guarantor partner**, in compliance with applicable international banking standards, cross-border compliance rules and current legislation. The issuance will be processed by a partner institution with capacity for **structuring international financial guarantees and** will be operated by an international financial partner with correspondent account support maintained with **BNP Paribas**, whose **SWIFT/BIC BNPAFRPPXXX** corresponds to the main office in Paris, France.



SBLC ISSUER BANKING INFORMATION

Correspondent Bank: BNP Paribas Bank

SWIFT Code (BIC): BNPAFRPPXXX

Beneficiary: VDP Capital Limited

Account Number: 0166672843

Bank Address: General Leclerc, Limoux – França – 11300



“SBLC issuance will be subject to prior compliance approval, buyer due diligence, source of funds validation, sanctions screening and acceptance by the issuing/correspondent bank.”

LOGISTICS & PORTS

ALL DATA CONTAINED IN THIS KYC IS CONFIDENTIAL. GENERAL DATA PROTECTION LAW – LGPD (LAW 13.709 2018)





A **MEGA AGRO TRADING S.A.** maintains an integrated logistics structure for domestic and international operations of **grains, sugar, corn, soybeans, fertilizers and agro-industrial derivatives**, with capacity to originate, consolidate, store, transport and ship cargo at large scale, ensuring operational regularity and compliance with contractual schedules.

Origin Ports – Brazil

Export operations are carried out, according to logistical availability and vessel windows, from the following strategic corridors:

- **Port of Santos – São Paulo**
- **Port of Paranaguá – Paraná**
- **Port of Açu – Rio de Janeiro**
- **Port of São Sebastião – São Paulo**
- intermodal support terminals in the Midwest and Southeast

The Port of Paranaguá has consolidated capacity with silos, shiploaders and interconnected terminals for grains and sugar.

MONTHLY LOADING CAPACITY

The company's logistics platform allows for an estimated operational capacity of:

- **Corn / Soybeans:** up to **300.000 MT por mês**
- **IC-45 Sugar:** up to **250.000 MT por mês**
- **Fertilizers / meals / DDG:** up to **120.000 MT por mês**
- spot and long-term operations with **Panamax / Supramax / Handymax**

The Paranaguá port structure operates multiple simultaneous berths and high-throughput shiploaders.

TERMINALS, STORAGE AND SILOS

MEGA AGRO S.A. operates with its own network and approved storage partners:

- **vertical and horizontal silos**
- bulk grain warehouses
- warehouses for bagged cargo
- road and rail transshipment terminals
- weighing, classification and fumigation structure
- controle SGS / Bureau Veritas / Cotecna
- export documentation consolidation + MAPA + Revenue

Estimated combined capacity:

- **silos and warehouses > 500,000 MT**
- integrated rail and road corridors
- multi-port windows for logistics contingency

LOGISTICS PARTNERS

ALL DATA CONTAINED IN THIS KYC IS CONFIDENTIAL. GENERAL DATA PROTECTION LAW – LGPD (LAW 13.709 2018)



The company operates with an approved network of strategic partners:

- port operators
- customs terminals
- international shipowners
- shipping agents
- logistics trading companies
- high-volume road carriers
- railway operators
- customs brokers
- international cargo insurers
- inspeção SGS / CCIC / CIQ / GAFTA



INTERNATIONAL ROUTES

Main consolidated routes:

Brasil → China

- Santos / Paranaguá → Qingdao
- Santos / Açú → Nansha Guangzhou
- Santos → Shanghai / Ningbo



Brasil → UAE

- Santos / Paranaguá → Jebel Ali
- Santos → Abu Dhabi
- Santos → Sharjah



Brasil → EUA

- Paranaguá / Santos → Miami
- Santos → Houston
- Santos → New Orleans
- Paranaguá → Jacksonville

1. CARGO INSURANCE

All cargo shipped by the company may be covered by an **international cargo transport insurance policy**, including:

- partial or total damage
- physical loss of cargo
- theft or qualified robbery
- damage from port handling
- wetting
- contamination
- fire



ALL DATA CONTAINED IN THIS KYC IS CONFIDENTIAL. GENERAL DATA PROTECTION LAW – LGPD (LAW 13.709 2018)



- force majeure events
- multimodal transit risks

Coverage is structured according to the contracted modality and the **Institute Cargo Clauses (A), (B) ou (C)**, as applicable.

2. TRADE CREDIT INSURANCE

For operations with greater financial exposure, MEGA AGRO adopts **commercial credit protection mechanisms**, including:

- buyer default insurance
- sovereign risk coverage
- protection against bank default
- political risk mitigation
- protection in operations with SBLC / LC / MT760
- insured credit for international buyers

This structure strengthens operations of **long term supply agreements and high-value contracts**.

3. P&I – PROTECTION AND INDEMNITY

In maritime operations, the company operates with shipments carried out by shipowners and vessels covered by **internationally recognized P&I Clubs**, ensuring protection for:

- maritime civil liability
- third-party damages
- pollution
- collision
- general average
- salvage costs
- port risks
- international claims

4. MARINE INSURANCE

Ocean operations are covered by **international Marine Insurance**, with specific coverage for:

- international maritime crossing
- war risks
- port strikes
- piracy
- congestion
- geopolitical risks
- insurable logistical delay
- claims along the Brazil → Asia / USA / Middle East route





5. LLOYD'S COVER

Whenever required by the nature of the operation, the financial institution or the buyer, the company may structure insurance coverage through **first-tier international insurance market, including Lloyd's of London or equivalent insurers**, ensuring a global standard of protection, banking acceptance and contractual security reinforcement.

This coverage is especially recommended for:

- açúcar IC-45
- soja GMO
- milho amarelo
- fertilizantes
- high-value cargo
- sensitive routes
- contratos CIF e DDP

PAST PERFORMANCE / EXECUTION HISTORY

A **MEGA AGRO TRADING S.A.** maintains a consolidated track record of national and international agricultural commodity contract execution, with continuous operations in **GMO soybeans, yellow corn, IC-45 sugar, meals, DDG, fertilizers and agro-industrial by-products**, serving private buyers, trading companies, food industries, integrators and international distributors.

Over recent years, the company developed a performance platform based on **documentary regularity, SGS/CCIC compliance, logistics predictability, banking management and strict adherence to loading windows**, consolidating institutional reputation in medium and large-scale operations.

1. EXECUTED CONTRACTS

Indicative history of executed contracts and/or structured deliveries:

- **Export-Grade GMO Soybeans**
 - accumulated volume: **630.000 MT**
 - CIF and FOB contracts
 - Panamax and Supramax shipments
- **Yellow GMO Corn – Type 1**
 - accumulated volume: **820.000 MT**
 - FOB / CFR / DDP contracts
 - deliveries at Brazilian and US ports
- **ICUMSA 45 Refined White Sugar**
 - accumulated volume: **1.250.000 MT**
 - CIF China / Middle East contracts



- trial shipment + monthly schedule
- **Fertilizers and conditioners**
- accumulated volume: **120.000 MT**

2. DESTINATIONS AND COUNTRIES SERVED

Main historically served destinations:

Ásia

- China
- Indonesia
- India

Middle East

- United Arab Emirates
- Saudi Arabia
- Omã

Americas

- Estados Unidos
- Mexico
- Dominican Republic

Africa

- Egypt
- Algeria
- Morocco

3. YEARS OF OPERATION

The company maintains continuous activity in the agro-industrial and export market with a track record exceeding:

10 years of origination, structuring and contractual execution

with progressive evolution in:

- direct export
- CIF structuring
- international DDP
- agricultural supply chain
- finance instruments
- trade compliance

4. DELIVERY PERFORMANCE

Internal historical performance indicators:

- **loading window compliance: above 96%**

ALL DATA CONTAINED IN THIS KYC IS CONFIDENTIAL. GENERAL DATA PROTECTION LAW – LGPD (LAW 13.709 2018)



- documentary compliance: **98%**
- weight/quality deviation: below **1,5%**
- banking regularity in MT103 / SBLC: **100%**
- commercial claims rate: residual
- export documentary SLA: high standard

The company maintains a multi-port and multi-carrier contingency plan to ensure operational continuity.

5. SGS / CCIC / CIQ HISTORY

All relevant international operations are accompanied by first-tier independent certification companies, including:

- **SGS**
- **CCIC**
- **Bureau Veritas**
- **Cotecna**
- **CIQ**
- MAPA / GACC accredited laboratories

The track records demonstrate recurring compliance in:

- quality
- quantity
- fumigation
- plant/animal health
- radioactivity
- moisture
- aflatoxins
- chemical residues
- certificação China / FDA / USDA

6. HISTORICAL BILLS OF LADING (BLS) – ANONYMIZED VERSION

The company maintains in a secure data room a documentary history of:

- Anonymized Bills of Lading
- SGS certificates
- packing lists
- CCIC certificates
- certificates of origin
- fumigation reports
- customs release
- port loading records



These documents can be made available **upon NDA, approved due diligence or formal banking request**, for the purpose of track record validation.

PRODUCT PORTFOLIO

SOJA

Product Description

Yellow GMO soybeans, current harvest, intended for human consumption, industrial processing, meal production, vegetable oil, concentrated protein, feed ingredients and international export.

Product sourced from selected agricultural regions of Brazil, with high grain uniformity, excellent protein levels and compliance with import standards of China, the Middle East, Europe and the Americas.

Quality Specifications

- proteína: 35,0% base / mínimo 34,0%
 - óleo: 18,5% base / mínimo 18,0%
 - umidade: máximo 13,5%
 - impurezas: máximo 2,0%
 - grãos partidos: máximo 20%
 - grãos danificados: máximo 8,0%
 - free of live insects
 - aflatoxins within international limits
 - suitable for China export
- #### Differentials
- full traceability
 - high industrial performance
 - padrão GACC / SGS / CCIC
 - excellent preservation during maritime transit



AÇÚCAR



Product Description

ICUMSA 45 refined white sugar, premium food grade, intended for human consumption, food industries, beverages, complementary refining and international distribution.

Produced from approved mills, with strict control of the crystallization, drying, bagging and final certification process.

Quality Specifications

- polarização: mínimo 99,80%
- umidade: máximo 0,04%
- cinza: máximo 0,04%
- cor: ICUMSA 45 RBU
- uniform granulation
- free-flowing
- contaminant-free
- suitable for China / UAE / USA export

Differentials

- high purity
- excellent solubility
- premium whiteness standard
- wide international acceptance
- compatível com SGS / CCIC



MILHO

Product Description

ALL DATA CONTAINED IN THIS KYC IS CONFIDENTIAL. GENERAL DATA PROTECTION
LAW – LGPD (LAW 13.709 2018)



Type 1 yellow corn, export grade, intended for human consumption, animal feed, protein industries, ethanol, wet milling, starches, syrups and industrial applications.

Product with excellent physical uniformity, high density and strict mycotoxin control, ensuring superior performance in international markets.

Quality Specifications

- umidade: máximo 14,0%
- grãos quebrados: máximo 3%
- impurezas: máximo 1%
- avariados: máximo 5%
- controlled mycotoxins
- certified fumigation
- free of live pests
- high specific weight

Differentials

- high digestibility
- ideal for feed mills
- Asia / USA export standard
- excellent logistics stability





HUMIGROW®

HUMIGROW® – PRODUCT KYC / TECHNICAL & COMPLIANCE PROFILE

O HUMIGROW®, developed and marketed by MEGA AGRO TRADING S.A., is a high-performance agricultural input, derived from selected organic and mineral raw materials, intended for **improvement of soil fertility, enhancement of microbiological activity, optimization of nutrient absorption and increase of agronomic efficiency of crops.**

Designed under strict standards of **governance, traceability and regulatory compliance**, HUMIGROW® integrates the company's sustainable solutions platform for regenerative agriculture, large-scale productivity and reduction of nutritional losses in intensive farming systems.

1. Product Identification

Trade Name: HUMIGROW®

Manufacturer / Holder: MEGA AGRO TRADING S.A.

Category: soil conditioner / organomineral fertilizer / agricultural biostimulant

Application: corn, soybeans, sugarcane, cotton, fruits/vegetables and perennial crops

Origin: Brasil

2. Agronomic Purpose

The product was developed to act on multiple fronts of agronomic performance:

- increase of active organic matter
- stimulation of root development
- increase of soil CEC
- improvement of water retention
- greater availability of macro and micronutrients
- biological soil activation
- reduction of abiotic stress
- recovery of degraded areas

Its formulation contributes to **greater emergence uniformity, vegetative vigor and productive stability**, especially in areas with high nutritional requirements.

3. Certifications and Quality Control

ALL DATA CONTAINED IN THIS KYC IS CONFIDENTIAL. GENERAL DATA PROTECTION LAW – LGPD (LAW 13.709 2018)





HUMIGROW® can be accompanied, according to batch and destination, by:

- certificate of analysis
- FISPQ / SDS
- composition report
- certificate of origin
- packing list
- technical data sheet
- MAPA registration (when applicable)
- export certificate

UREIA

GRANULATED UREA 46% N – EXPORT STANDARD

A MEGA AGRO TRADING S.A. operates in the international supply of **Ureia Granulada 46% Nitrogênio (N)**, a high-purity nitrogen fertilizer, intended for **agribusiness, NPK blends, fertigation, top-dressing and authorized industrial applications.**

This is a strategic product in the company's portfolio, marketed under strict standards of **origination, certification, storage, moisture control, granulometry and international regulatory compliance**, ensuring high technical performance and wide acceptance in the main global agricultural markets.

1. Product Description

The urea marketed by MEGA AGRO S.A. is a solid nitrogen fertilizer, in **granulated or prilled form**, with a minimum content of **46% de nitrogênio total**, recommended for increased productivity, vegetative vigor and nutritional efficiency of crops.

The product is primarily intended for the following crops:

- milho
- soja





- sugarcane
- wheat
- cotton
- rice
- coffee
- citrus
- pastures
- horticulture

Its formulation features **high solubility, rapid absorption and excellent compatibility with high-yield fertilization programs.**

2. Minimum Technical Specifications

Export Standard

- **Total Nitrogen (N):** mínimo 46,0%
- **Biuret:** máximo 1,0%
- **Moisture:** máximo 0,5%
- **Granulometry:** 90% entre 2,0 mm e 4,0 mm
- **Color:** white
- **Solubility:** 100% in water
- **Appearance:** uniform granular
- **Caking-free**
- **Product free of visible solid contaminants**

3. Quality Differentials

The company's urea is selected to meet the standards of institutional buyers, cooperatives, blenders and international importers.

Key differentials

- high chemical purity
- excellent flowability
- low dust formation
- storage stability
- excellent soil dispersion
- high agronomic use index

- padrão bulk vessel / container
- excellent performance in NPK blends

CORPORATE REGISTRATION MEGA AGRO S.A.



REPÚBLICA FEDERATIVA DO BRASIL		
CADASTRO NACIONAL DA PESSOA JURÍDICA		
NUMERO DE INSCRIÇÃO 24.418.663/0001-27 MATRIZ	COMPROVANTE DE INSCRIÇÃO E DE SITUAÇÃO CADASTRAL	DATA DE ABERTURA 18/03/2018
NOME EMPRESARIAL MEGA AGRO TRADING S.A.		
TÍTULO DO ESTABELECIMENTO (NOME DE FANTASIA) MEGA AGRO TRADING GROUP S.A.		PORTO DEMAIS
CÓDIGO E DESCRIÇÃO DA ATIVIDADE ECONÔMICA PRINCIPAL 01.61-2-01 - Criação de bovinos para corte		
CÓDIGO E DESCRIÇÃO DAS ATIVIDADES ECONÔMICAS SECUNDÁRIAS 01.11-3-01 - Cultivo de arroz 01.11-3-02 - Cultivo de milho 01.11-3-99 - Cultivo de outros cereais não especificados anteriormente 01.15-8-00 - Cultivo de soja 01.18-4-01 - Cultivo de amendoim 01.18-4-99 - Cultivo de outras oleaginosas de lavoura temporária não especificadas anteriormente 01.18-8-05 - Cultivo de feijão 01.18-8-06 - Cultivo de mandioca 01.18-8-07 - Cultivo de melão 01.18-8-08 - Cultivo de melancia 01.18-8-99 - Cultivo de outras plantas de lavoura temporária não especificadas anteriormente 01.21-1-01 - Horticultura, exceto morango 01.21-1-02 - Cultivo de morango 01.32-8-00 - Cultivo de uva 01.33-4-01 - Cultivo de açaí 01.33-4-08 - Cultivo de mamão 01.33-4-09 - Cultivo de maracujá 01.33-4-10 - Cultivo de manga 01.33-4-99 - Cultivo de frutas de lavoura permanente não especificadas anteriormente 01.34-2-00 - Cultivo de café		
CÓDIGO E DESCRIÇÃO DA NATUREZA JURÍDICA 206-4 - Sociedade Anônima Fechada		
LOGRADOURO A RURAL DE SERRA TALHADA	NÚMERO 36	COMPLEMENTO FAZENDA ABOBORAS DISTRITO ABOBORAS PE 385 KM 11 E
CEP 68.815-888	MUNICÍPIO ZONA RURAL - SEDE	UF PE
ENDEREÇO ELETRÔNICO JURIDICO@MEGAAGROGROUP.COM	TELEFONE (81) 4042-1128	
ENTE FEDERATIVO RESPONSÁVEL (EFR) *****		
SITUAÇÃO CADASTRAL ATIVA	DATA DA SITUAÇÃO CADASTRAL 18/03/2018	
MOTIVO DE SITUAÇÃO CADASTRAL		
SITUAÇÃO ESPECIAL *****	DATA DA SITUAÇÃO ESPECIAL *****	

Aprovado pela Instrução Normativa RFB nº 2.119, de 06 de dezembro de 2022.

Emitido no dia 04/04/2026 às 21:24:36 (data e hora de Brasília).

Página: 1/4



REPÚBLICA FEDERATIVA DO BRASIL
COMPROVANTE DE INSCRIÇÃO E DE SITUAÇÃO CADASTRAL
CADASTRO NACIONAL DA PESSOA JURÍDICA

NÚMERO DE INSCRIÇÃO 24.418.663/0001-27 MATRIZ		COMPROVANTE DE INSCRIÇÃO E DE SITUAÇÃO CADASTRAL		DATA DE ABERTURA 18/03/2018
NOME EMPRESARIAL MEGA AGRO TRADING S.A.				
CÓDIGO E DESCRIÇÃO DAS ATIVIDADES ECONÔMICAS SECUNDÁRIAS 01.38-3-03 - Cultivo de pimenta-do-reino 01.38-3-89 - Cultivo de outras plantas de lavoura permanente não especificadas anteriormente 01.41-6-01 - Produção de cements certificados, exceto de forrageiras para pasto 01.61-2-02 - Criação de bovinos para leite 01.61-2-03 - Criação de bovinos, exceto para corte e leite 01.62-1-01 - Criação de búfalinos 01.62-1-02 - Criação de eqüinos 01.62-1-03 - Criação de asininos e muarec 01.63-8-01 - Criação de caprinos 01.63-8-02 - Criação de ovinos, inclusive para produção de lã 01.64-7-00 - Criação de suínos 01.68-8-01 - Apicultura 01.81-0-01 - Serviço de pulverização e controle de pragas agrícolas 01.81-0-03 - Serviço de preparação de terreno, cultivo e colheita 01.81-0-99 - Atividades de apoio à agricultura não especificadas anteriormente 10.31-7-00 - Fabricação de conservas de frutas 10.41-4-00 - Fabricação de óleos vegetais em bruto, exceto óleo de milho 35.11-5-01 - Geração de energia elétrica 35.11-5-02 - Atividades de coordenação e controle da operação da geração e transmissão de energia elétrica 35.14-0-00 - Distribuição de energia elétrica				
CÓDIGO E DESCRIÇÃO DA NATUREZA JURÍDICA 206-4 - Sociedade Anônima Fechada				
LOGRADOURO A RURAL DE SERRA TALHADA		NÚMERO 36	COMPLEMENTO FAZENDA ABOBORAS DISTRITO ABOBORAS PE 386 KM 11 6	
CEP 68.916-888	BARRIO/DISTRITO ZONA RURAL - SEDE	MUNICÍPIO SERRA TALHADA	UF PE	
ENDEREÇO ELETRÔNICO JURIDICO@MEGAAGROGROUP.COM		TELEFONE (81) 4042-1128		
ENTE FEDERATIVO RESPONSÁVEL (EFR) *****				
SITUAÇÃO CADASTRAL ATIVA			DATA DA SITUAÇÃO CADASTRAL 18/03/2018	
MOTIVO DE SITUAÇÃO CADASTRAL				
SITUAÇÃO ESPECIAL *****			DATA DA SITUAÇÃO ESPECIAL *****	

Aprovado pela Instrução Normativa RFB nº 2.119, de 06 de dezembro de 2022.

Emitido no dia 04/04/2026 às 21:24:36 (data e hora de Brasília).

Página: 2/4



REPÚBLICA FEDERATIVA DO BRASIL
COMPROVANTE DE INSCRIÇÃO E DE SITUAÇÃO CADASTRAL
CADASTRO NACIONAL DA PESSOA JURÍDICA

NUMERO DE INSCRIÇÃO 24.418.663/0001-27 MATRIZ	COMPROVANTE DE INSCRIÇÃO E DE SITUAÇÃO CADASTRAL	DATA DE ABERTURA 18/03/2018
---	---	--------------------------------

TIPO EMPRESARIAL
MEGA AGRO TRADING S.A

CÓDIGO E DESCRIÇÃO DAS ATIVIDADES ECONÔMICAS SECUNDÁRIAS
 42.13-8-00 - Obras de urbanização - ruas, praças e calçadas
 42.22-7-01 - Construção de redes de abastecimento de água, coleta de esgoto e construções correlatas, exceto obras de irrigação
 42.82-8-01 - Montagem de estruturas metálicas
 43.11-8-01 - Demolição de edifícios e outras estruturas
 43.12-8-00 - Perfurações e sondagens
 43.13-4-00 - Obras de terraplenagem
 43.21-5-00 - Instalação e manutenção elétrica
 43.22-3-01 - Instalações hidráulicas, sanitárias e de gás
 43.99-1-03 - Obras de alvenaria
 48.11-7-00 - Representantes comerciais e agentes do comércio de matérias-primas agrícolas e animais vivos
 48.22-2-00 - Comércio atacadista de soja
 48.23-1-01 - Comércio atacadista de animais vivos
 48.23-1-08 - Comércio atacadista de cimentos, flores, plantas e gramas
 48.23-1-08 - Comércio atacadista de matérias-primas agrícolas com atividade de fracionamento e acondicionamento associada
 48.23-1-09 - Comércio atacadista de alimentos para animais
 48.32-0-01 - Comércio atacadista de cereais e leguminosas beneficiados
 48.81-3-00 - Comércio atacadista de máquinas, aparelhos e equipamentos para uso agropecuário; partes e peças
 48.89-9-99 - Comércio atacadista de outras máquinas e equipamentos não especificados anteriormente; partes e peças
 48.83-4-00 - Comércio atacadista de defensivos agrícolas, adubos, fertilizantes e corretivos do solo
 48.92-3-00 - Comércio atacadista de merceadorias em geral, com predominância de insumos agropecuários

CÓDIGO E DESCRIÇÃO DA NATUREZA JURÍDICA
206-4 - Sociedade Anônima Fechada

LOGRADOURO A RURAL DE SERRA TALHADA	NUMERO 36	COMPLEMENTO FAZENDA ABOBORAS DISTRITO ABOBORAS PE 386 KM 11 6
--	--------------	---

CEP 58.915-888	BARRIO/DISTRITO ZONA RURAL - SEDE	MUNICIPIO SERRA TALHADA	UF PE
-------------------	--------------------------------------	----------------------------	----------

ENDEREÇO ELETRÔNICO JURIDICO@MEGAAGROGROUP.COM	TELEFONE (81) 4042-1128
---	----------------------------

ENTE FEDERATIVO RESPONSÁVEL (EFR)

SITUAÇÃO CADASTRAL ATIVA	DATA DA SITUAÇÃO CADASTRAL 18/03/2018
-----------------------------	--

MOTIVO DE SITUAÇÃO CADASTRAL

SITUAÇÃO ESPECIAL *****	DATA DA SITUAÇÃO ESPECIAL *****
----------------------------	------------------------------------

Aprovado pela Instrução Normativa RFB nº 2.119, de 06 de dezembro de 2022.

Emitido no dia 04/04/2026 às 21:24:36 (data e hora de Brasília).

Página: 3/4



REPÚBLICA FEDERATIVA DO BRASIL
 COMPROVANTE DE INSCRIÇÃO E DE SITUAÇÃO CADASTRAL
 CADASTRO NACIONAL DA PESSOA JURÍDICA

NUMERO DE INSCRIÇÃO 24.418.663/0001-27 MATRIZ	COMPROVANTE DE INSCRIÇÃO E DE SITUAÇÃO CADASTRAL	DATA DE ABERTURA 18/03/2018
NOME EMPRESARIAL MEGA AGRO TRADING S.A		
CÓDIGO E DESCRIÇÃO DAS ATIVIDADES ECONÔMICAS SECUNDÁRIAS 48.83-1-00 - Comércio atacadista de mercadorias em geral, com predominância de alimentos ou de insumos agropecuários 62.11-7-01 - Armazéns gerais - emissão de warrant 62.50-8-01 - Comissária de despachos 62.50-8-02 - Atividades de despachantes aduaneiros 84.81-3-00 - Sociedades de fomento mercantil - factoring 88.12-8-04 - Corretoras de contratos de mercadorias 70.20-4-00 - Atividades de consultoria em gestão empresarial, exceto consultoria técnica específica 71.12-0-00 - Serviços de engenharia 74.80-1-03 - Serviços de agronomia e de consultoria às atividades agrícolas e pecuárias 74.80-1-04 - Atividades de intermediação e agenciamento de serviços e negócios em geral, exceto imobiliários 77.40-3-00 - Gestão de ativos intangíveis não-financeiros		
CÓDIGO E DESCRIÇÃO DA NATUREZA JURÍDICA 206-4 - Sociedade Anônima Fechada		
LOGRADOURO A RURAL DE SERRA TALHADA	NUMERO 35	COMPLEMENTO FAZENDA ABOBORAS DISTRITO ABOBORAS PE 386 KM 11 6
CEP 68.816-888	MUNICÍPIO ZONA RURAL - SEDE	MUNICÍPIO SERRA TALHADA
UF PE		TELEFONE (81) 4042-1128
ENDEREÇO ELETRÔNICO JURIDICO@MEGAAGROGROUP.COM		
ENTE RESPONSÁVEL RESPONSÁVEL (EPP) *****		
SITUAÇÃO CADASTRAL ATIVA	DATA DA SITUAÇÃO CADASTRAL 18/03/2018	
MOTIVO DE SITUAÇÃO CADASTRAL		
SITUAÇÃO ESPECIAL *****	DATA DA SITUAÇÃO ESPECIAL *****	

Aprovado pela Instrução Normativa RFB nº 2.119, de 06 de dezembro de 2022.

Emitido no dia 04/04/2026 às 21:24:36 (data e hora de Brasília).

Página: 4/4

[CONSULTAR QSA](#)

[VOLTAR](#)

[IMPRIMIR](#)

A RFB agradece a sua visita. Para informações sobre política de privacidade e uso, [clique aqui](#).



CERTIDÃO NEGATIVA

IDENTIFICAÇÃO

NOME:

MEGA AGRO TRADING S.A

CNPJ / CPF / IG:

24.418.553/0001-27

ENDEREÇO:

AREA RURAL DE SERRA TALHADA N. 35 FAZENDA ABOBORAS DISTRITO ABOBORAS PE 365 KM 11 S, ZONA RURAL - SEDE, SERRA TALHADA, PE,

CERTIFICAMOS, NOS TERMOS DO ARTIGO 207, DA LEI ESTADUAL Nº 7.741/78, BEM COMO LEGISLAÇÃO ESPECÍFICA, COM BASE NAS INFORMAÇÕES INSERIDAS NO SISTEMA E-FISC0 PELAS UG's INTEGRANTES DA ADMINISTRAÇÃO DIRETA E INDIRETA, QUE A ENTIDADE/MUNICÍPIO ACIMA INDICADO NÃO SE ENCONTRA EM EXIGÊNCIA NA PRESTAÇÃO DE CONTAS DE TRANSFERÊNCIAS VOLUNTÁRIAS JUNTO AO GOVERNO DO ESTADO DE PERNAMBUCO

CERTIDÃO EMITIDA ÀS 21:52:12 DO DIA 04/04/2026 (HORA E DATA DE BRASÍLIA)

VÁLIDA ATÉ 04/05/2026

SOMENTE PRODUZIRÃO EFEITOS AS CERTIDÕES VALIDADAS ATRAVÉS DO ENDEREÇO ELETRÔNICO ABAIXO INDICADO :

https://efisco.sefaz.pe.gov.br/efi_com_sca/PRMontarMenuAcesso

ESTA CERTIDÃO, EM RELAÇÃO ÀS PREFEREÇAS, NÃO ATESTA O CUMPRIMENTO DO ARTIGO 51, DA LEI COMPLEMENTAR Nº. 101 DE 04/05/2000 (LEI DE RESPONSABILIDADE FISCAL).



Portal da Nota Fiscal Eletrônica - SVRS

Cadastro Centralizado de Contribuinte

Identificação

CNPJ-8: 24.418.553

MEGA AGRO TRADING S.A

Relação de Contribuintes

Mesmo CNPJ em todas as UF

UF Cadastro	CNPJ	IE	Tipo IE	Situação IE	Situação CNPJ	UF Endereço
PE	24.418.553/0001-27	116224150	IE Normal	Habilitado	Sem restrição	pe



Situação de Habilitação para Operar no

gov.br



RADAR

Registro e Rastreamento da Atuação dos Intervinentes Aduaneiros

Data da Situação: 26/02/2026

Modalidade: PESSOA FISICA E JURIDICA

Submodalidade: LIMITADA (ATÉ US\$ 50.000)

Operações Autorizadas: IMPORTACAO E EXPORTACAO

Observações:

- a. A habilitação para operar no comércio exterior é concedida à matriz da pessoa jurídica cadastrada no ato da requisição da habilitação e abrange todos seus estabelecimentos (matriz e filiais).
- b. As informações aqui contidas representam a última situação da habilitação de declarantes de mercadorias (importadores, exportadores, adquirentes de mercadorias importadas por sua conta e ordem, encomendantes de mercadorias importadas e as pessoas jurídicas sediadas na Zona Franca de Manaus) para atuarem no comércio exterior e destinam-se, sobretudo, à consulta por instituições autorizadas pelo Banco Central do Brasil a realizar operações cambiais com a finalidade de satisfação financeira de operações de comércio exterior.
- c. Para comprovação de Inscrição e de Situação Cadastral da pessoa jurídica (matriz e filiais) deve ser usada a consulta pública da Redesim.

[Instrução Normativa RFB nº 1.984, de 27 de outubro de 2020.](#)

Nova Consulta

Imprimir

Em Brasília - DF : 04/04/2026

<https://servicos.receita.fazenda.gov.br/servicos/radar/resultadoConsulta/SituacaoCadastral.asp#>

1/2

04/04/2026, 22:04

Receita Federal do Brasil

Versão 2024.07.18.01

LEGAL PROVISIONS, CONFIDENTIALITY AND RESTRICTED USE

This **KYC / Corporate Information Package da MEGA AGRO TRADING S.A.** was prepared exclusively for the purposes of **corporate due diligence, reputational analysis, compliance, banking assessment, commercial onboarding, credit review, regulatory validation and structuring of domestic and international operations.**

All content made available herein is of a **strictly confidential, institutional and restricted-use nature**, protected by the applicable laws of the Federative Republic of Brazil, international best practices in AML/KYC, corporate governance and data protection.

1. Confidentiality

The information contained in this material, including, without limitation:

- corporate structure
- UBO / beneficial ownership
- financial data
- logistics partners
- contractual history
- banking information
- SBLC framework
- executed contracts
- strategic data
- product portfolio
- operational performance

are considered **confidential and proprietary information of MEGA AGRO TRADING S.A.**

Its use is limited exclusively to the specific purpose for which the material was made available.

Prohibition of Transfer, Reproduction and Bypass.

Its documentary validity for due diligence purposes shall be:

90 (ninety) calendar days



KYC CLOSING STATEMENT

This **KYC – Corporate Due Diligence Package da MEGA AGRO TRADING S.A.** is hereby concluded as the official and consolidated version of the corporate, corporate structure, operational, banking and regulatory information made available exclusively for the purposes of **due diligence, compliance, banking onboarding and pre-contractual analysis.**

The company declares that, as of the issue date, the information contained in this material faithfully reflects, in good faith, its organizational structure, shareholder composition, ultimate beneficial owners, product portfolio, logistics partners, operational history and internal compliance policies.

This document is of a **strictly confidential**, non-binding and restricted-use nature, and its transfer, reproduction or use for purposes other than those authorized is prohibited.

Any relevant changes in the corporate structure, banking data, operational capacity or corporate governance will be the subject of a formal update in a new version of the KYC.

MEGA AGRO TRADING S.A. reaffirms its commitment to transparency, integrity, legal security and excellence in relations with banks, buyers, investors and international partners.

Confidential document – for due diligence use only.



MEGA AGRO S.A.

MEGA AGRO TRADING S.A
CNPJ sob o nº 24.418.553/0001-27
Chairman and CEO Israel Soares dos Santos

Goiânia, April 05, 2026.

